

# SUBLEASE

## 1205 MOFFAT BLVD MANTECA, CA

### PROPERTY HIGHLIGHTS

- ±52,269 SF Total
- ±1,200 SF Office
- Hazardous materials room
- Excellent freeway access and visibility
- Intermodal facilities nearby
- Good location for distribution
- Sublease through December 2013



**For more information, please contact:**

**Bryce MacDonald | Industrial Group | 209.473.3000 | [bryce.macdonald@grubb-ellis.com](mailto:bryce.macdonald@grubb-ellis.com) | License #01422174**

Grubb & Ellis Company 3031 W. March Lane, Suite 103, Stockton, CA 95219 209.473.3000 209.956.6889 Fax License #00812184

The information contained herein was obtained from third parties, and it has not been independently verified by the real estate brokers. Buyers/tenants should have the experts of their choice inspect the property and verify all information. Real estate brokers are not qualified to act as or select experts with respect to legal, tax, environmental, building construction, soils-drainage or other such matters.



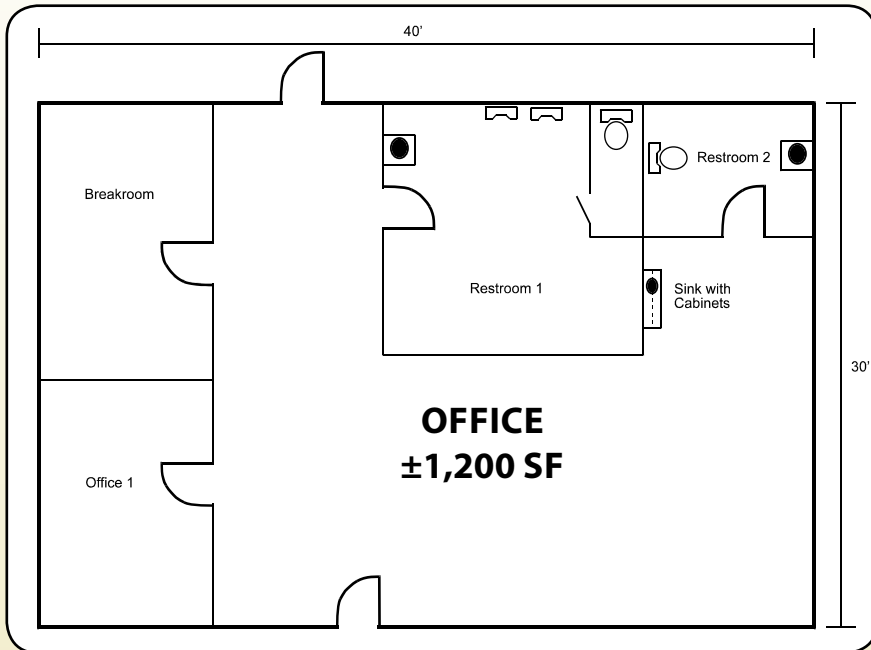
**CENTRAL VALLEY COMMERCIAL**



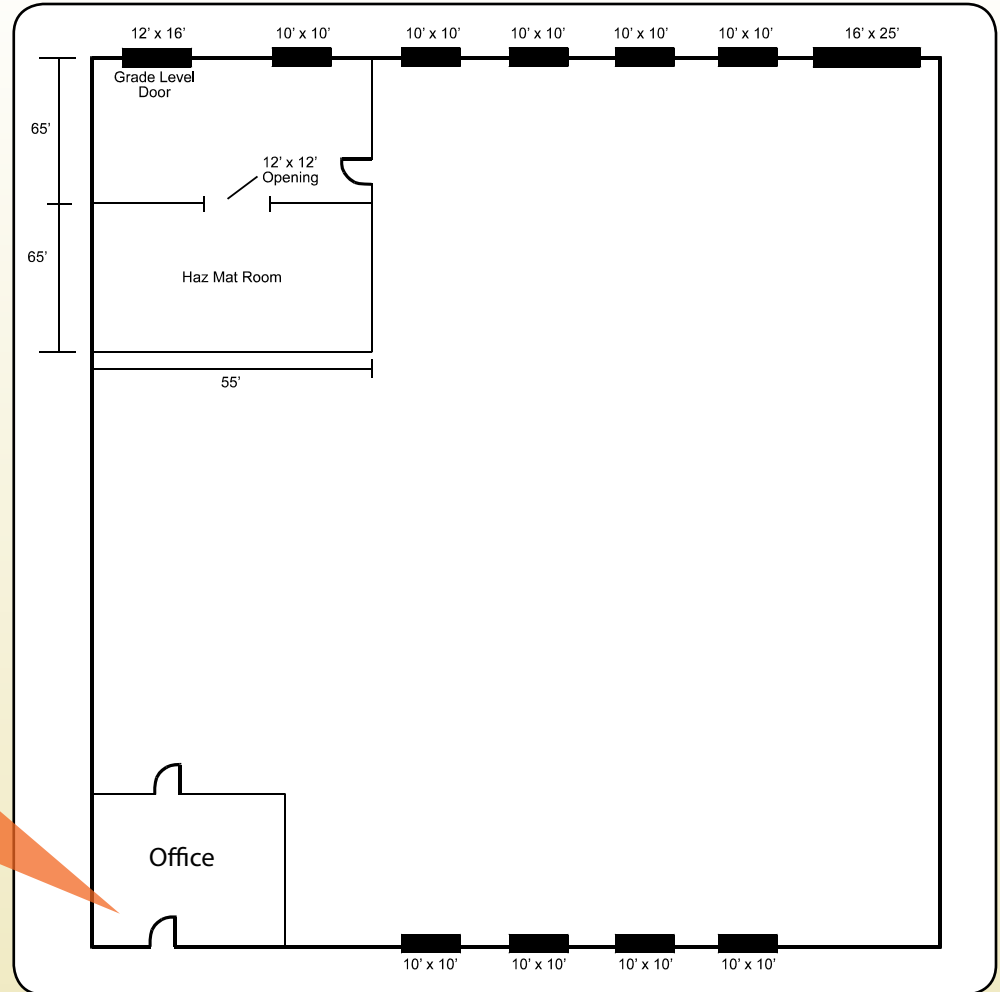
**GRUBB & ELLIS**  
From Insight to Results

# SUBLEASE

## SITE PLAN



Not To Scale



Not To Scale

**For more information, please contact:**



**Bryce MacDonald | Industrial Group | 209.473.3000 | [bryce.macdonald@grubb-ellis.com](mailto:bryce.macdonald@grubb-ellis.com) | License #01422174**

Grubb & Ellis Company 3031 W. March Lane, Suite 103, Stockton, CA 95219 209.473.3000 209.956.6889 Fax License #00812184

